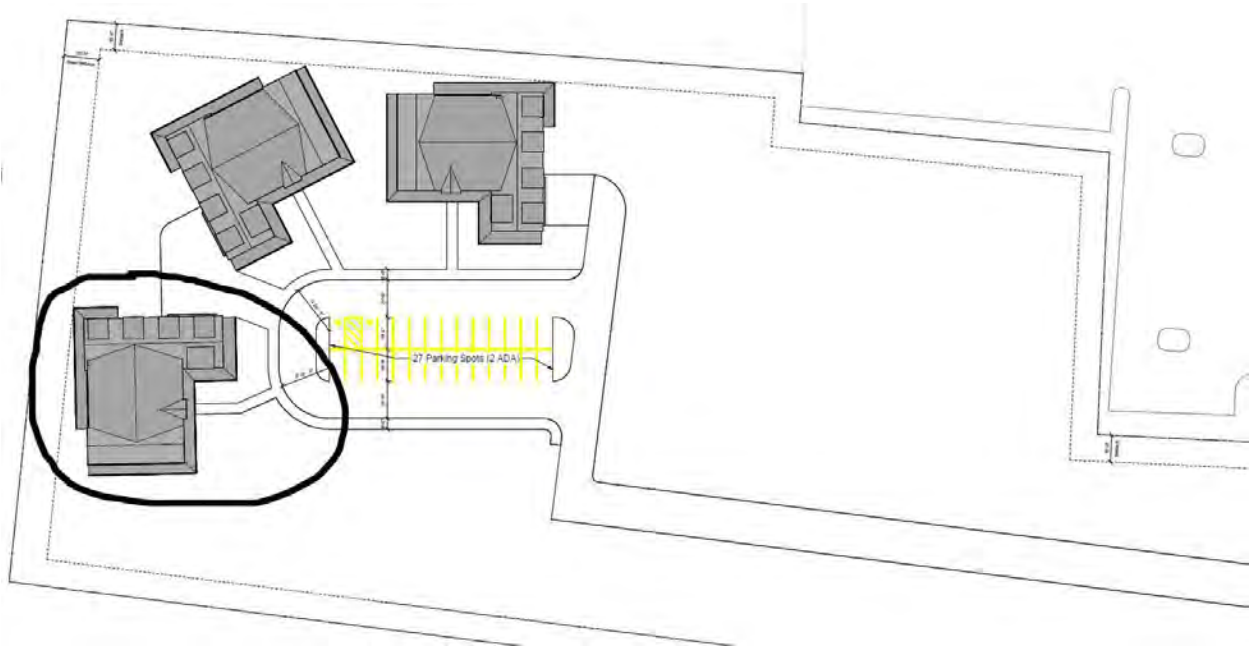
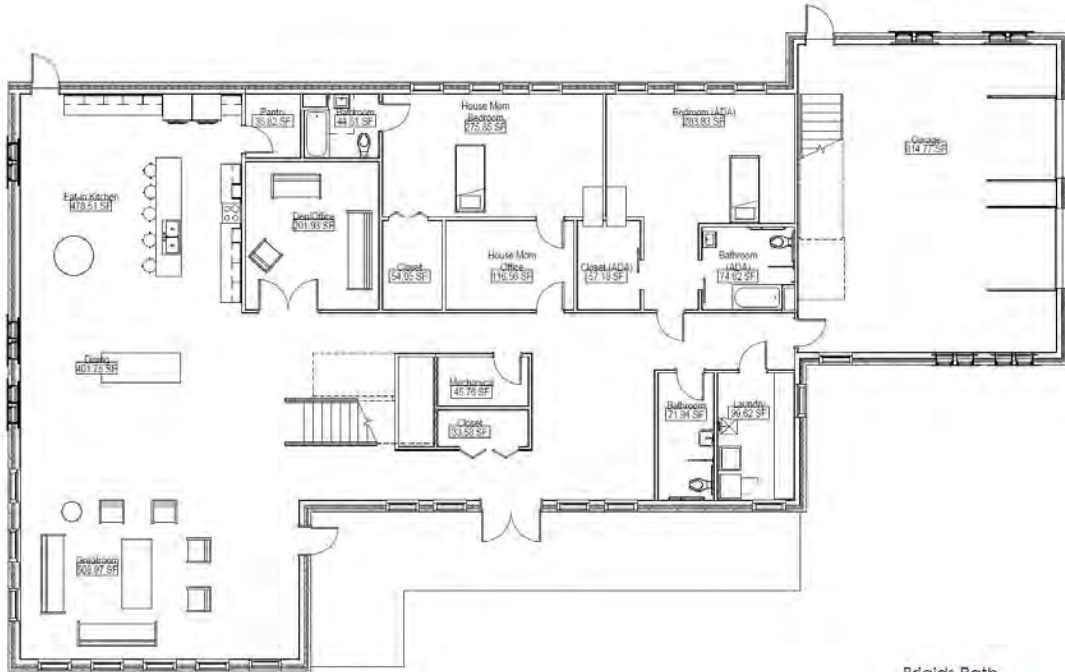


# Site plan





1 First Floor  
Scale: 1/8" = 1'-0"

Brigids Path  
P&L  
Bourne/Bulmer

**JOHN POE ARCHITECTS**  
11174 Memorial Drive, Suite 200 Marietta, OH 45750 | www.johnpoe.com | 614



Second Floor  
Scale: N.T.S.

Brigids Path  
P&L  
Bourne/Bulmer

**JOHN POE ARCHITECTS**  
11174 Memorial Drive, Suite 200 Marietta, OH 45750 | www.johnpoe.com | 614

November 1, 2023

To whom it may concern:

I am writing to express my full support for the Brigid's Path housing initiative, emphasizing its critical role in safeguarding the health and well-being of our community. As the President & CEO of the Greater Dayton Area Hospital Association (GDAHA), I deeply value initiatives that contribute to the overall health of our region. Our collective vision as a hospital association "to be the catalyst for change and improve the health of all people who live, work, and play in the Greater Dayton area" recognizes the importance of living well, which cannot be done without safe, secure, and affordable housing.

The establishment of Ohio's first newborn recovery center by Brigid's Path is a monumental stride in supporting the health and recovery of vulnerable babies born substance exposed and their mothers affected by substance use disorder. The housing initiative is part of the continuum of care in nurturing a healthy environment that fosters healing and stability for these families.

The necessity for safe and supportive housing for individuals grappling with substance use disorder is paramount in ensuring community health. Brigid's Path's comprehensive approach extends beyond mere shelter, offering education, resources, and empowerment, creating an environment conducive to healing and supporting the health and well-being of these families.

Empowering these individuals to rebuild their lives and promoting a healthier, stable environment for these families aligns with our commitment to enhancing community health and well-being. Preserving the health and stability of these families is crucial to building a healthier and more resilient community.

I wholeheartedly endorse the Brigid's Path housing initiative, recognizing its significant role in promoting community health. As the President & CEO of GDAHA, I am dedicated to supporting and contributing to initiatives that advance the health and well-being of our community and look forward to seeing Brigid's Path succeed in their transformative work.

Sincerely,



Sarah Hackenbracht  
President & CEO

Access Hospital Dayton

Atrium Medical Center

Dayton Children's Hospital

Dayton Veterans Affairs  
Medical Center

Grand Lake Health System

Haven Behavioral Hospital

Indu and Raj Soin Medical  
Center

Kettering Health Behavioral  
Medical Center

Kettering Health Dayton

Kettering Health Greene  
Memorial

Kettering Health Hamilton

Kettering Health Main Campus

Kettering Health Miamisburg

Kettering Health Troy

Kettering Health Washington  
Township

Kindred Hospital Dayton

Mercy Health – Springfield  
Regional Medical Center

Mercy Health – Urbana  
Hospital

Miami Valley Hospital

Miami Valley Hospital North

Miami Valley Hospital South

PAM Specialty Hospital of  
Dayton

Shriners Children's Ohio

The Rehabilitation Institute of  
Ohio

Upper Valley Medical Center

Wayne HealthCare

Wilson Health

Wright Patterson Medical  
Center

October 30, 2023



To whom it may concern,

As a Miami Township Trustee deeply invested in the well-being and prosperity of our community, I am writing to offer my support for the Brigid's Path housing initiative. The initiative's commitment to addressing the critical needs of vulnerable mothers and their babies during times of adversity aligns with our township's dedication to fostering a supportive and thriving community.

The pressing need for safe and supportive housing, especially for women grappling with substance abuse, is a challenge our community confronts. Brigid's Path stands out as a beacon of hope in meeting this need by providing a holistic continuum of care and a nurturing environment essential for the well-being and development of these families.

The initiative's comprehensive approach goes beyond mere housing. It's about fostering a sense of community among these women, providing educational resources, and empowering them in their journey toward recovery. This inclusive strategy resonates with our township's values.

Furthermore, Brigid's Path's commitment to supporting mothers in parenting their children to prevent the need for foster care aligns perfectly with our community's goal of preserving family units and ensuring a stable and nurturing environment for our youngest residents.

I wholeheartedly endorse the Brigid's Path housing initiative and its vital role in addressing the multifaceted needs of our community members. I am eager to endorse this initiative's success and positive impact within our community.

Please contact me at [jmorris@miamitownship.com](mailto:jmorris@miamitownship.com) or 937-367-8537 with any questions.

Sincerely,

  
John Morris  
President  
Board of Trustees



CITY OF KETTERING  
OFFICE OF THE MAYOR

---

November 2, 2023

To whom it may concern,

As the Mayor of Kettering, it is with great appreciation and support that I convey my endorsement for the Brigid's Path housing initiative, specifically acknowledging the incredible impact of the newborn recovery center in our community. The influence and dedication of Brigid's Path underscore the significance of supporting the housing initiative.

The newborn recovery center has been an invaluable resource, providing unmatched care and support for vulnerable babies and their mothers. Its remarkable contributions highlight its pivotal role in our community's well-being.

The need for safe and supportive housing for women struggling with substance abuse is an ongoing concern in our community. Through its comprehensive care and nurturing environment, Brigid's Path has demonstrated an unwavering commitment to addressing this critical need.

Additionally, the initiative extends beyond providing housing fostering a supportive community for these women. By offering education, resources, and empowerment, Brigid's Path has emerged as a critical asset in our community, fostering healing, and resilience.

The dedication to support mothers in parenting their children, thereby reducing the necessity for foster care, aligns perfectly with our city's values of fostering family bonds and ensuring the well-being of our youngest residents.

I proudly endorse the Brigid's Path housing initiative, recognizing its invaluable contribution to our community, largely due to the exceptional impact of the newborn recovery center. As the Mayor, I am dedicated to supporting to ensure the continued success of this vital initiative.

Sincerely,

A handwritten signature in blue ink that reads "Peggy Lehner".

Peggy Lehner  
Mayor, City of Kettering

## DEPARTMENT OF JOB & FAMILY SERVICES

### CHILDREN SERVICES DIVISION

3304 N. Main Street  
Dayton, Ohio 45405-2709

937-224-KIDS (5437) - phone  
937-276-1852 - fax  
937-276-6587 - fax (Health Services)

[www.mcoho.org](http://www.mcoho.org)

### COUNTY COMMISSIONERS

Judy Dodge  
Deborah A. Lieberman  
Carolyn Rice

### COUNTY ADMINISTRATOR

Michael B. Colbert

### DEPARTMENT DIRECTOR

Michelle Niedermier



November 2, 2023

To whom it may concern:

I am writing to express our support for the Brigid's Path housing initiative and the remarkable establishment of Ohio's first newborn recovery center. As the Associate Director of Montgomery County Department of Job and Family Services-Children Services Division, we deeply understand the critical need to maintain the bond between mothers and their babies, particularly during challenging circumstances.

The newborn recovery center plays a pivotal role in supporting vulnerable babies born substance exposed and their mothers struggling with substance abuse disorder. Preserving this essential bond is paramount in our efforts to keep families together and ensure the well-being of these young children.

The provision of secure and nurturing housing for mothers grappling with substance use challenges is crucial in our mission to maintain family unity. Brigid's Path's housing innovative approach extends beyond shelter, promoting education, resources, and empowerment to facilitate healing and enhance the resilience of these families.

The significance of empowering mothers to parent their children effectively, thus reducing the need for foster care placement, cannot be overstated. This aligns with our agency's values, striving to reinforce family connections and protect the youngest and most vulnerable members of our community.

I wholeheartedly endorse the Brigid's Path housing initiative, recognizing its invaluable role in supporting the connection between mothers and their babies during these challenging circumstances.

Sincerely,

Craig R. Rickett, MSW, LSW  
Associate Director  
Montgomery County DJFS-CSD



November 2, 2023

To Whom It May Concern,

I am writing to express my support for the Brigid's Path housing initiative, particularly recognizing the urgent need for secure and supportive housing for women contending with substance use disorder. As the Executive Director of the Alcohol, Drug Addiction, and Mental Health Services System for Montgomery County, Ohio, I am acutely aware of the critical requirement for safe housing in supporting individuals navigating substance use challenges.

Brigid's Path's establishment of Ohio's first newborn recovery center stands as a beacon of hope for babies born substance-exposed and their mothers impacted by substance use disorder. The housing initiative is fundamental in providing a continuum of care for a secure and nurturing environment that fosters recovery and stability for these vulnerable families.

The pressing need for safe and supportive housing for women battling substance use disorder cannot be understated. Through its innovative approach, Brigid's Path goes beyond mere shelter, offering comprehensive care, education, and resources, creating an environment conducive to healing and empowerment.

Providing a safe, supportive, and sober living environment aligns seamlessly with the core mission of our organization. Preserving family unity and ensuring the well-being of these mothers and their children is a cornerstone of our efforts in addressing substance use challenges.

I wholeheartedly endorse the Brigid's Path housing initiative, recognizing its invaluable role in providing a safe place for recovery for women battling substance use disorder with their babies. As the Executive Director of the Alcohol, Drug Addiction, and Mental Health Services System for Montgomery County, Ohio, I support the success of this critical initiative.

Sincerely,

A handwritten signature in cursive script that reads "Helen E. Jones-Kelley".

Executive Director



To whom it may concern,

We are writing to reaffirm our unyielding commitment to the continued health and well-being of babies born substance-exposed and the vital continuum of care for safe housing following their stay at the newborn recovery center. As the Medical and Clinical Directors at Brigid's Path, ensuring the ongoing welfare of these vulnerable infants remains our utmost priority.

The establishment of the newborn recovery center stands as a cornerstone in supporting infants born substance-exposed, and their families. We are dedicated to providing comprehensive care, addressing the unique needs of these infants to ensure their healing and development during their stay with us.

The imperative for safe and supportive housing after their stay at the newborn recovery center is vital in securing the long-term well-being of these infants. Our commitment extends beyond medical care, encompassing resources, education, and empowerment for families to thrive in a secure and nurturing environment.

Empowering families to transition to safe housing post-recovery center care and ensuring a seamless continuum of care aligns with our core mission. We want to ensure these vulnerable infants' sustain their health and safety as they transition beyond the newborn recovery center to a supportive environment.

We wholeheartedly endorse the vision of Brigid's Path, emphasizing the continued health and well-being of infants born substance exposed and the essential of safe housing post newborn recovery center care. As Medical and Clinical Directors, we remain dedicated to the comprehensive well-being of our babies and families.

Sincerely,

Lisa R Jasin DNP, NNP-BC  
Clinical Director, Brigid's Path

Stephen Hunter, MD  
Medical Director, Brigid's Path



To Whom it May Concern,

I am delighted to convey my wholehearted endorsement for the ongoing efforts of Brigid's Path. As the President of the Board of Directors, I am deeply committed to the success and vision of our Organization.

The groundbreaking strides made by Brigid's Path in establishing Ohio's first newborn recovery center underscore our unwavering dedication to supporting vulnerable mothers and their infants. In December 2017, we had the opportunity to welcome our first baby into our care. Since that day, we have operated continuously, 24 hours per day, 7 days per week, and in so doing have served over 200 moms and babies on their journey of recovery and helping them move into life as a family. This accomplishment represents a significant milestone in our mission to create a nurturing and supportive environment for families affected by substance use challenges.

Our commitment to providing a safe and empowering environment goes beyond mere shelter. We are devoted to offering high quality comprehensive care, resources, and education, fostering healing and resilience within the community we serve.

Empowering mothers to overcome obstacles and fostering a supportive community aligns with our fundamental mission. Our commitment to strengthening the bond between mothers and their babies is at the core of our values, ensuring that families can thrive in a nurturing and secure environment.

I wholeheartedly endorse Brigid's Path and its continued dedication to supporting vulnerable families. As the President of the Board of Directors, I and the entire Board remain committed to driving our mission forward and ensuring the success of our vision.

Sincerely,

A handwritten signature in black ink that reads "John P. Haney". The signature is written in a cursive style with a large, looping initial "J" and a long, sweeping underline.

To whom it may concern

I am writing to express my enthusiastic support for the Brigid's Path housing initiative, emphasizing its critical role in safeguarding the health and well-being of our community, particularly our babies and mothers. As a hospital president and a dedicated Board Member, I am deeply committed to initiatives that contribute to the overall health of our region.

The establishment of Ohio's first newborn recovery center by Brigid's Path is a monumental stride in supporting the health and recovery of vulnerable infants and their mothers. This housing initiative plays a pivotal role in the continuum of care in nurturing a healthy environment that fosters healing and stability for these families.

The necessity for safe and supportive housing for individuals grappling with substance use disorder is paramount in ensuring community health. Brigid's Path's comprehensive approach extends beyond mere shelter, offering education, resources, and empowerment, creating an environment conducive to healing and supporting the health and well-being of these families.

Empowering these individuals to rebuild their lives and promoting a healthier, stable environment for these families aligns with our commitment to enhancing community health and well-being, particularly the health of our youngest members.

I wholeheartedly endorse the Brigid's Path housing initiative, recognizing its significant role in promoting community health, especially for our mothers and babies. As a hospital president and a Board Member, I am dedicated to supporting and contributing to initiatives that advance the health and well-being of our community.

Sincerely,

A handwritten signature in black ink, appearing to read 'Daniel Tryon', with a long, sweeping horizontal line extending to the right.

Daniel Tryon